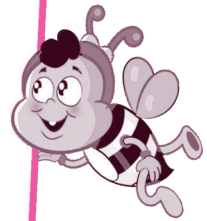


Ajyal Educational Series



# ENGLISH LEADERS



Activity Book **2**



Dar  
**GHAD AL AJYAL**  
For Publishing & Distributing

# ENGLISH LEADERS

## Activity Book 2



Third Edition

2024

All rights reserved to this book shall not be copied or used in any form or any means, whether through photocopying, electronic copying nor pantographing, including photographic copying, recording on tapes or CDs or any other method and keeping and retrieving information without prior notice from the publisher.

► Authors

Sadiyah Al-Sallal  
Haneen Abd Al-Kareem  
Amal Al-Sallal  
Noor Haimour  
Wala'a Mteir

► Art Director - Illustration

Naseem M Imtair

► Contribute in designing

Sara Abu Alhaj

► Contribute in drawing & colouring

Saleh Abu Fkhidah

National Library of Jordan  
Documentation & National Archives  
Deposit No.: (664/2/2018)

Published by :



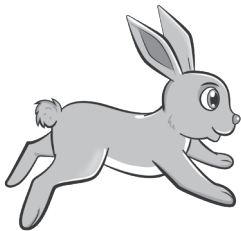
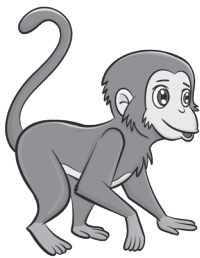
**Dar  
GHAD AL AJYAL**  
For Publishing & Distributing

Tel. +962 6 515 7 555  
Fax. +962 6 515 7 550  
Mob.+962 7 77 08 00 09  
P.O.Box 1995 Amman-11941 Jordan  
info@ajyall.com

[www.ajyall.com](http://www.ajyall.com)

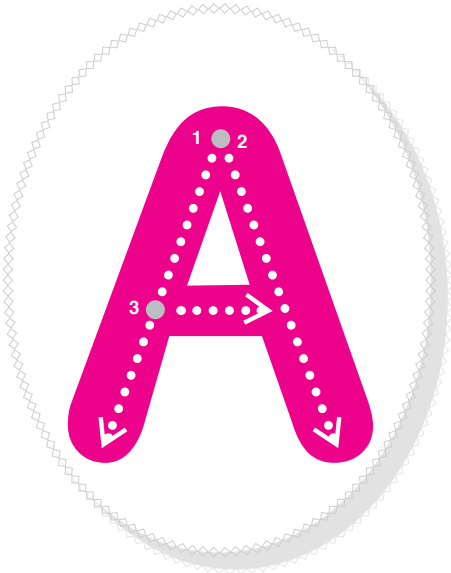


Trace.



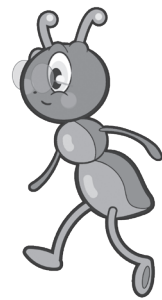


Trace and write.

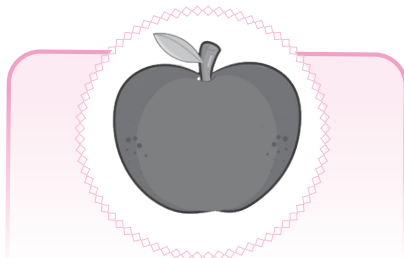




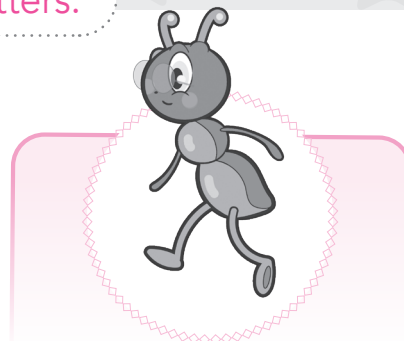

Match.



Circle the correct beginning letters.



A B C



A B C



Trace and write.

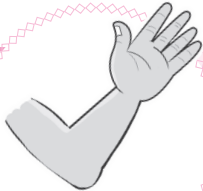






Match.



Circle the correct beginning letters.



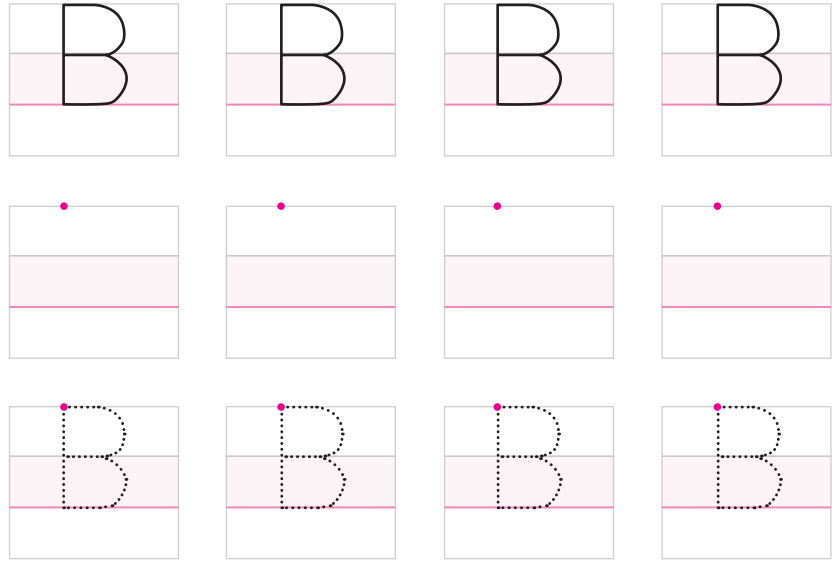
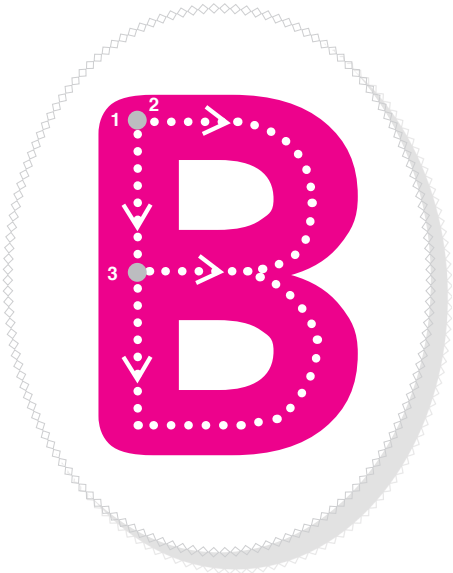
**a b c**



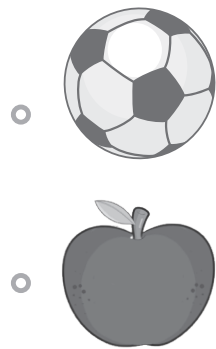
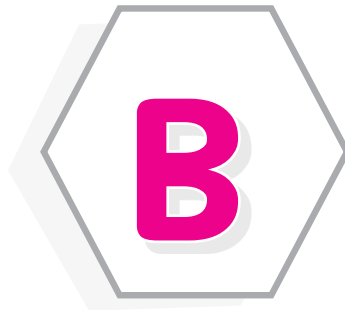
**a b c**



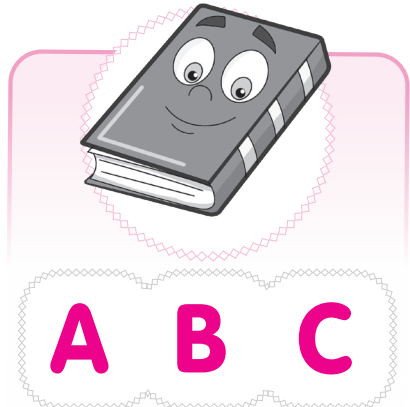
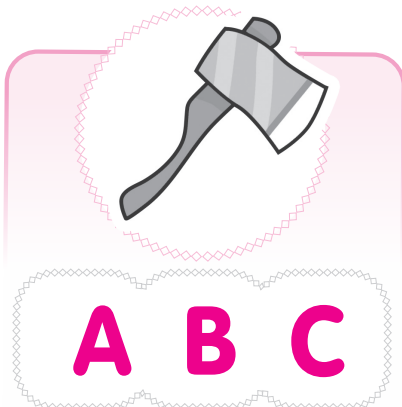
Trace and write.



Match.

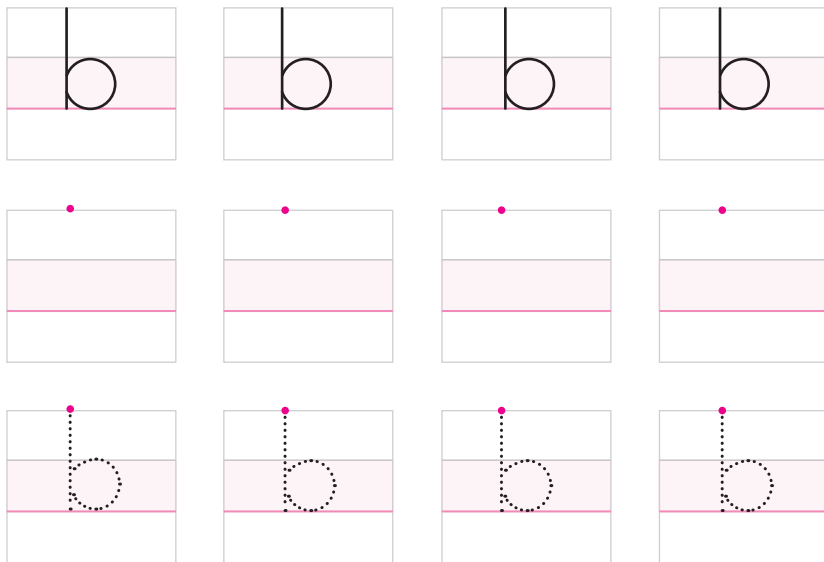
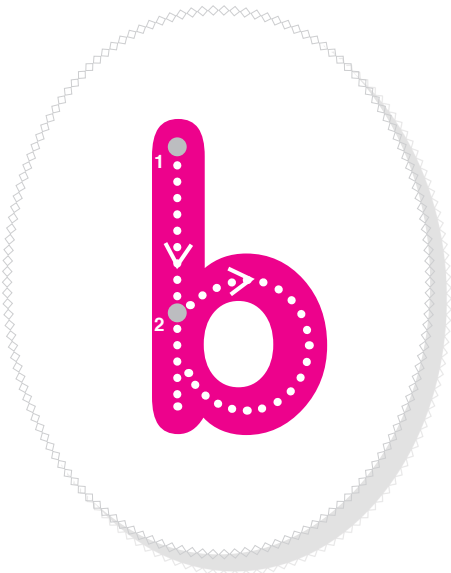


Circle the correct beginning letters.





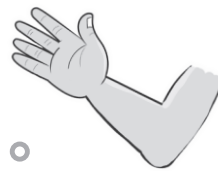
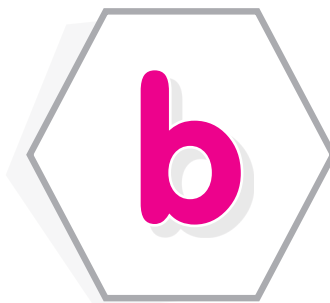
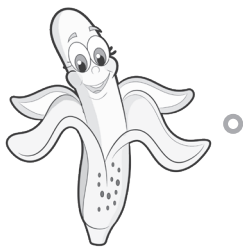
Trace and write.



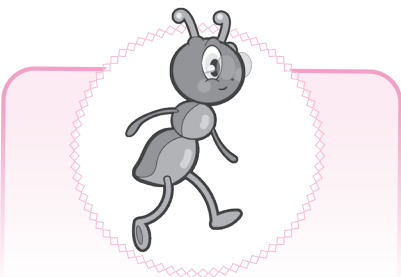
Copying Direction



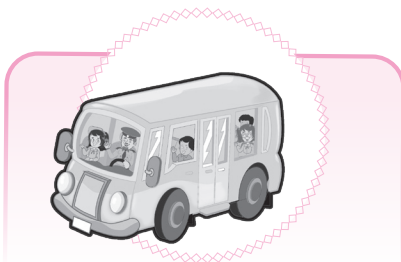
Match.



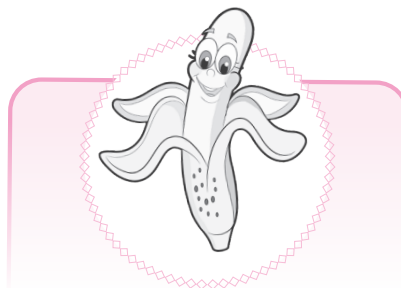
Circle the correct beginning letters.



a b c



a b c



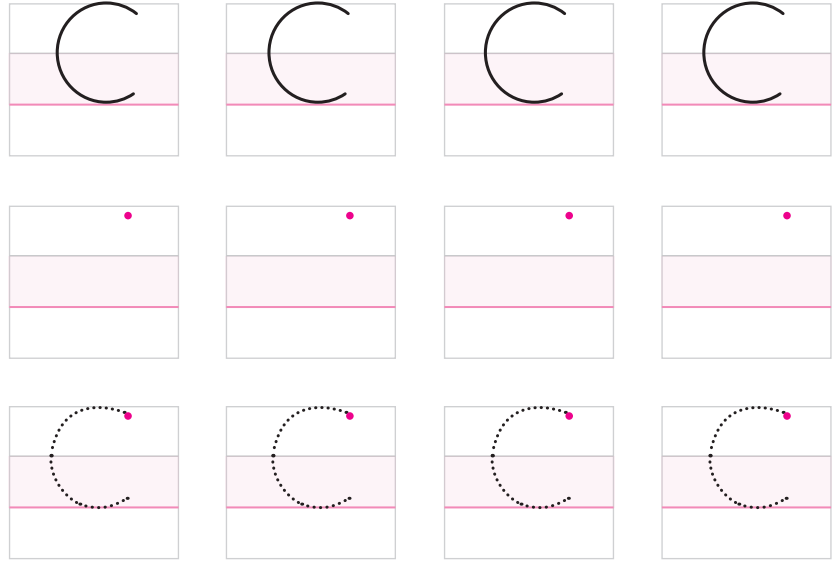
a b c



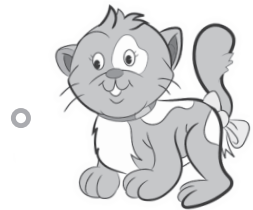
Trace and write.



2  
1  
Copying Direction



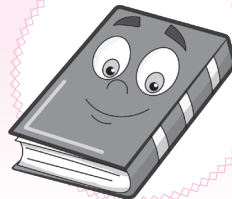
Match.



Circle the correct beginning letters.



A B C



A B C



A B C



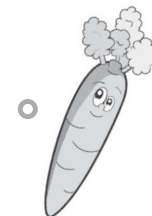
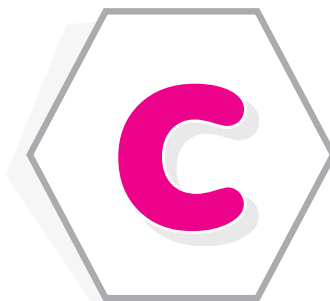
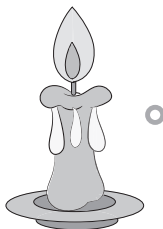


Trace and write.






Match.



Circle the correct beginning letters.

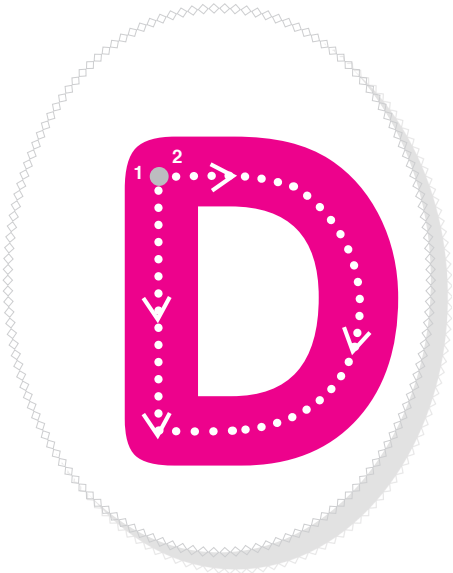
**a b c**

**a b c**

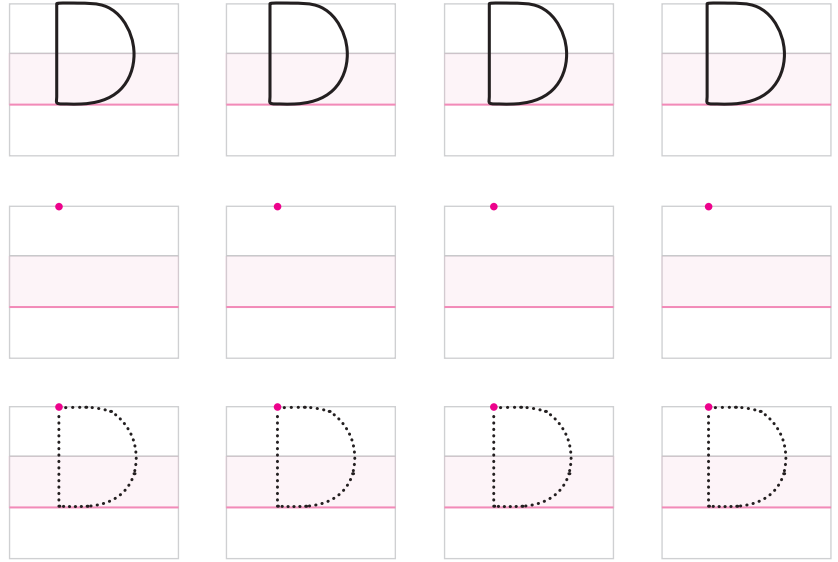
**a b c**



Trace and write.



Copying Direction



Match.



Circle the correct beginning letters.



B C D



B C D



B C D